

## Rutland County Council

Catmose, Oakham, Rutland, LE15 6HP

Telephone 01572 722577

Email: [democraticservices@rutland.gov.uk](mailto:democraticservices@rutland.gov.uk)

Ladies and Gentlemen,

A meeting of the **SCHOOLS' FORUM** will be held Council Chamber, RCC, Catmose, Oakham, Rutland LE15 6HP on **Thursday, 9th May, 2024** commencing at **4.00 pm** when it is hoped you will be able to attend.

Yours faithfully

Mark Andrews  
**Chief Executive**

Recording of Council Meetings: Any member of the public may film, audio-record, take photographs and use social media to report the proceedings of any meeting that is open to the public. A protocol on this facility is available at [www.rutland.gov.uk/my-council/have-your-say/](http://www.rutland.gov.uk/my-council/have-your-say/)

Although social distancing requirements have been lifted there is still limited available seating for members of the public. If you would like to reserve a seat, please contact Democratic Services at [democraticservices@rutland.gov.uk](mailto:democraticservices@rutland.gov.uk). The meeting will also be available for listening live on Teams using the following link: <https://tinyurl.com/hhrn7avn>

### **5) DELIVERING BETTER VALUE (DBV) SEND PROGRAMME UPDATE**

To receive a presentation from Kulwinder Bola, SEND Improvement Programme Manager, RCC.

[ITEM FOR INFORMATION]

(15 MINUTES)

(Pages 3 - 16)

---oOo---

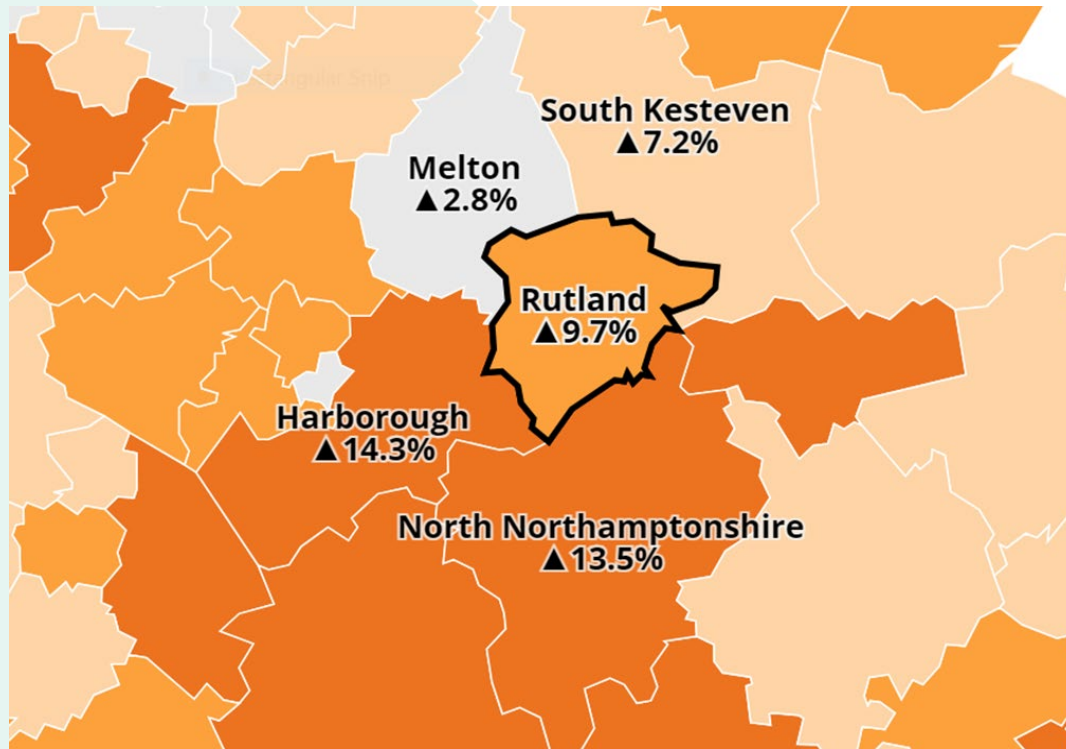
This page is intentionally left blank

---

Rutland County Council

**Update on Special Educational Needs and/  
or Disabilities in Rutland – Schools Forum  
9<sup>th</sup> May 2024**

## The local demographic overview of Rutland – ONS figure 2011-2021



In Rutland, the population size has increased by **9.7%**, from around 37,400 in 2011 to 41,000 in 2021.

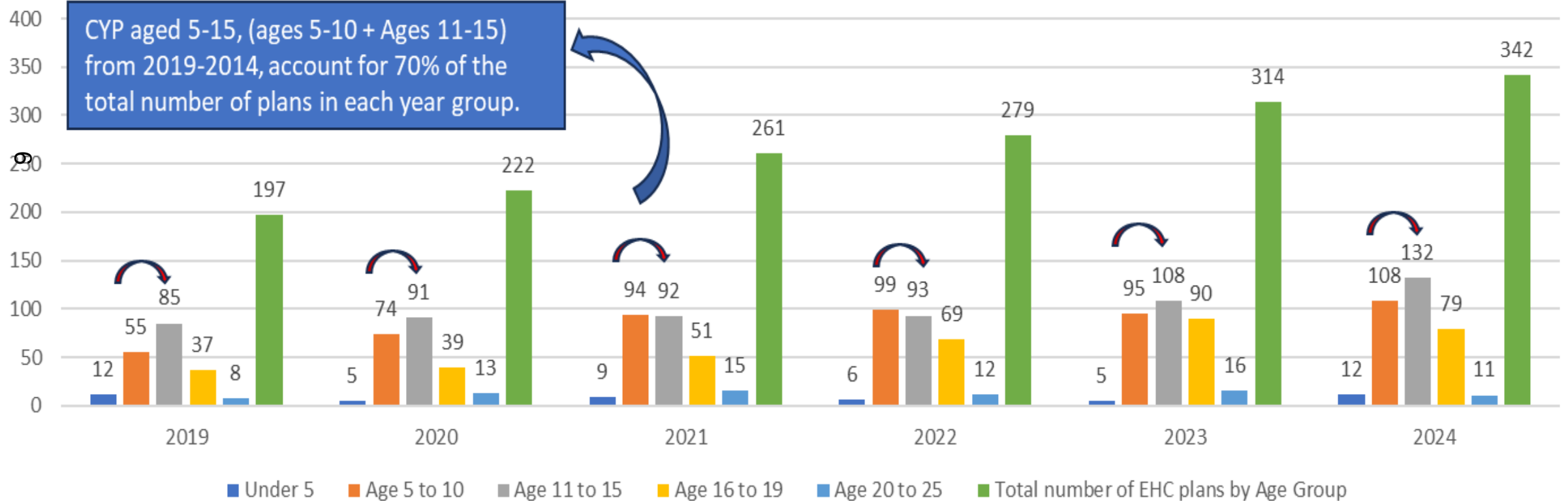
This is higher than the overall increase for England (**6.6%**), where the population grew by nearly 3.5 million to 56,489,800.

An increase in population could mean an increase in the number of children and adults identified as having a special educational need and/ or a disability (SEND).

- **To ensure we are meeting the needs of our EHCP cohort in the best way we can**
  - Enabling greater feelings of belonging by keeping children and young people with, and without SEND, together - (where possible)
  - Helping children and young people with SEND to live and receive their education in their home community\* (where possible).

## SEND Profile by age 2019-2024

Age of Children and Young People with SEND from 2019-2024



## – List of all primary SEND needs

\*Autistic Spectrum Disorder (ASD)

Hearing Impairment (HI)

\*Moderate Learning Difficulty (MLD)

Multi- Sensory Impairment (MSI)

Physical Disability (PD)

Profound & Multiple Learning Difficulty (PMLD)

\*Social, Emotional and Mental Health (SEMH)

\*Speech, Language and Communications needs (SLCN)

Severe Learning Difficulty (SLD)

Specific Learning Difficulty (SpLD)

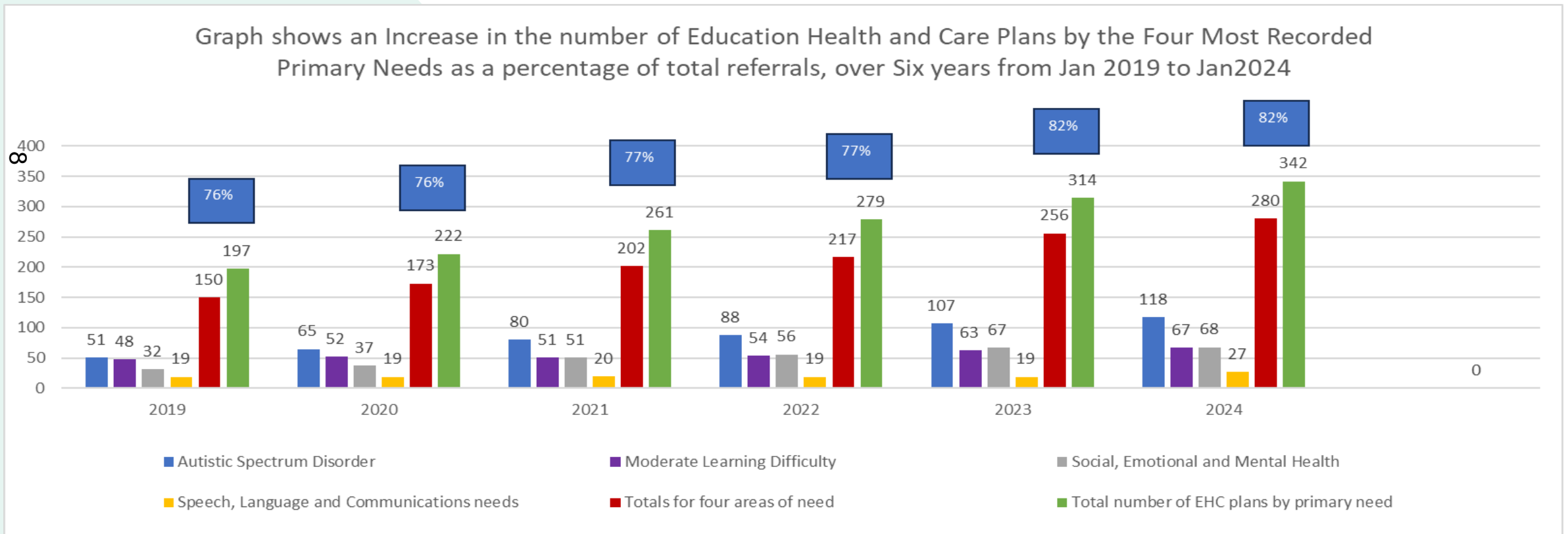
Visual Impairment (VI)

Other Difficulty/Disability (OD)

SEN support but no specialist assessment of type of need (SEN)

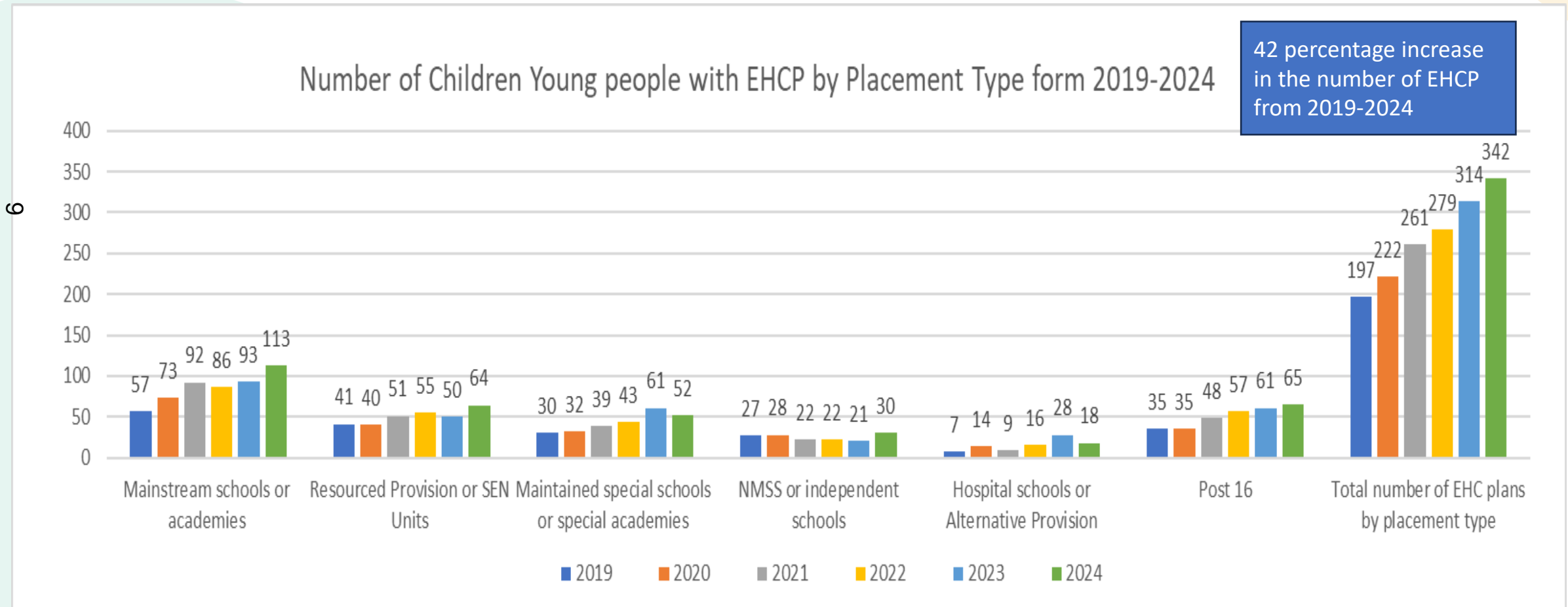
## — To ensure early and accurate identification of primary need so that intervention is timely and appropriate

- The four most frequently reported needs on EHCP over last six years were: ASD, SEMH, MLD, SLCN.





## — Rutland children and young people with an EHCP by placement type 2021-2024

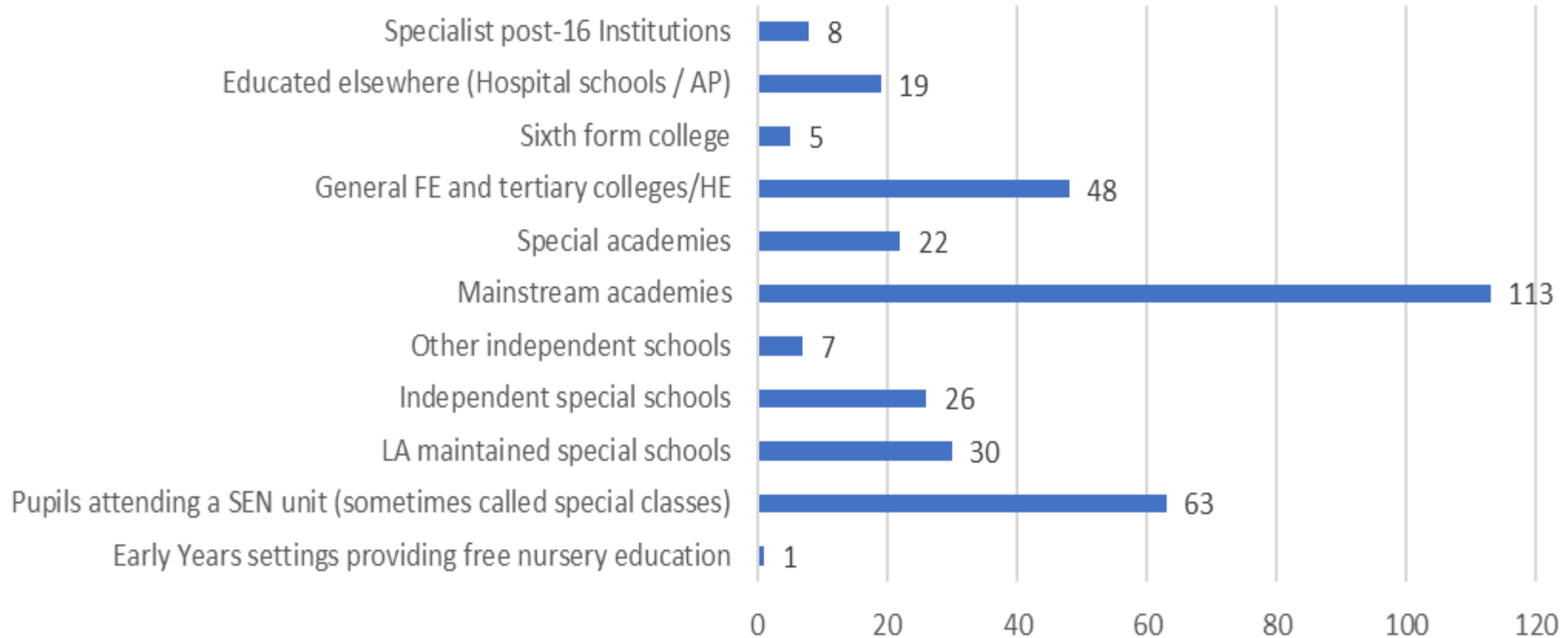


## Number of Pupils by setting and by National Curriculum Year Groups

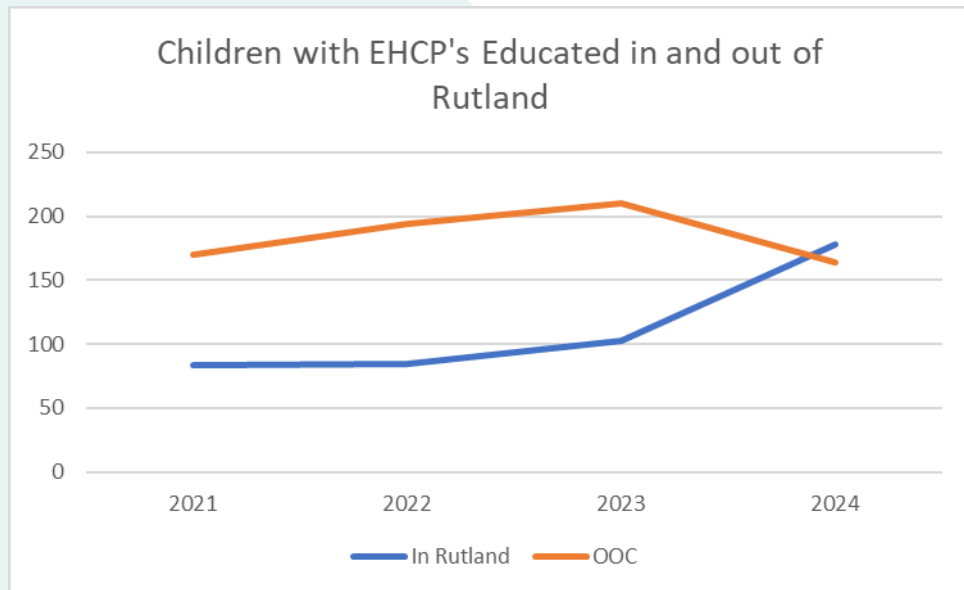
29/02/2024		Type of Setting							
Number of Pupils in each type of setting shown by National Curriculum Year Groups	Type of Setting							Grand Total	
	NCY	AP	INMSS	Mainstream	Post 16	Resource Base	Special School		
	-1				1			1	
	0				4		1	5	
	1		1		4		3	1	
	2				4		2	3	
	3	1	4		6		4	3	
	4		1		16		4	4	
	5		1		14		1	2	
Phased Transition	6	2	3		17		6	3	
	7	1	5		12		6	1	
	8	2	3		15		7	6	
	9	1	2		9		9	7	
	10		3		5		10	6	
	11	1	1		7		10	4	
Phased Transition	12		5			8		3	
	13	1	2			19		3	
	14	3	2			18		1	
	15	3				10			
	16	2				2			
	17	1							
	18					2			
	19	1				1			
	21					1			
	<b>Grand Total</b>	<b>19</b>	<b>33</b>		<b>114</b>	<b>61</b>	<b>63</b>	<b>52</b>	<b>342</b>

## Education Health and Care Plans by type of setting

342 EHCP by Setting Type Feb 2024



## — Trend in Rutland children and young people with an EHCP attending their local education setting



	2021	2022	2023	2024
<b>In Rutland</b>	84	85	103	178
<b>OOC</b>	170	194	210	164

## — What is the data telling us?

- In Rutland, there has been a noticeable increase in the Number of Education Health Care Plans from 2019 to 2024.
- The current number of EHCP as at mid-February 2024 at **342**.
- The increase in the number of EHC plans impacts on the High Needs overspend.
- Most children and young people with a plan are placed in Rutland's mainstream schools or Academies,
- There has been an increase in the more complex needs – resulting in more placements in expensive non-maintained special school (NMSS) - 21 placements in 2023 increasing to 30 places in 2024,.
- Overall Rutland numbers reflects national trends. The number of children and young people with EHC plans increased to 517,000, as at census day in January 2023, up by 9% from 2022. This has increased each year since 2010. (Latest published data)

## What action we are taking – Delivering Better Value

Rutland County Council continues to see a steep rise in the volume of EHCP's in the last year, from 314 in Jan 2023 to 342 in Feb 2024, there has been an increase of 28 plans. This in turn impacts on the High Needs overspend. The DBV program is expected to make savings over time as shown below:

2024/25	£737k
2025/26	£1,418k
2026/27	£2,231k
2027/28	£3,126k
2028/29	£3,220k
2029/30	£3,317k

Despite these savings, the deficit is anticipated to be £2.3m at the end of *this financial year*, 2023/24 and the accumulative deficit is expected to rise to £16.9m by 2029/30. This assumes £3.3m of “in year savings” shown above.

Please note that the DBV aims to arrest the deficit but will not return it to a balanced budget without change to policy or central government funding.

## In Summary:-

The aim of DBV is to actively seeks to build the capability which meets wider need within Rutland's mainstream education settings for those with SEND and increase the parental confidence in the offer available within their community. So that children and young people with SEND can benefit from exceptional education nearer to their home and the High Needs funding can be used more effectively within, and across, Rutland.

# ANY QUESTIONS

This page is intentionally left blank